

# Pre -Course Information



Thank you for booking with the Offshore Training Centre (OTC) Please read all the information below carefully to ensure you are prepared for the training course.

## Course Details:

Course Name: GWO Manual Handling (Combined Full & Refresher)  
Start & Finish Time: 13:00 – 16:00  
Location: OTC GRO Centre  
Duration: 0.5 day  
Certificate valid for: 2 Years

## Pre - Requisites

- Email documentation to [bookings@otc-grimsby.co.uk](mailto:bookings@otc-grimsby.co.uk)
- All pre-requisites must be sent before the start of the course
- Please see attached medical declaration form to be completed /returned
- Your GWO WINDA ID (to register visit <https://winda.globalwindsafety.org/>)

*Please note we are not responsible for ensuring you have a Winda ID, without you may be refused entry on the course.*

*\*It is your responsibility to ensure you are attending the refresher course before the expiry of your previous training record validity period\**

## Course Information

- The aim of this module is to enable participants, through theoretical and practical training, to reduce the risk of musculoskeletal injuries in the wind industry and enable participants to perform their tasks and activities in the safest possible way when working in a wind turbine environment.
- After having successfully complete this BST Manual Handling module, the participants will have the ability to take responsibility for the use of essential manual handling principles to reduce the risk of musculoskeletal injury when performing physical tasks and activities in the wind industry.

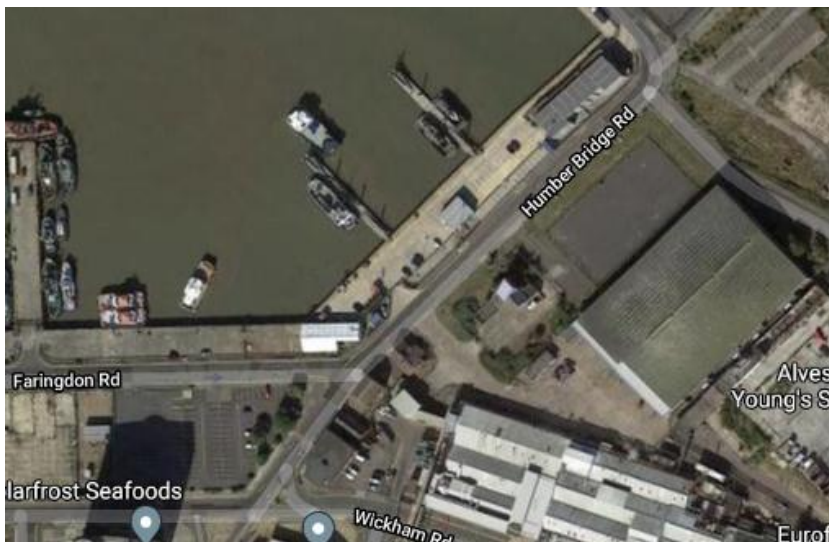
## What you need to bring:

- **Clothing** – Comfortable clothing and safety boots.
- **Photographic Identification**- Valid Passport, driving license, UK ID or similar which the trainer will check before the course begins.

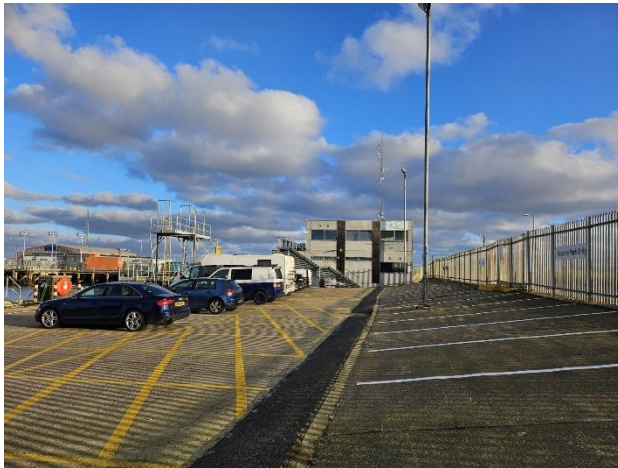
## Course Location:

- **Address** – The GRO Centre is located in the ABP Port of Grimsby, you will pass Security & Information Point on Murray St and follow the signage on the roundabout for OTC. To get to the ABP security and information point, use the postcode DN31 3AS in your sat nav. If stopped by security, you will be asked to show photo ID.
- **What3words:** Value.Shots.Acid
- **Please note: If you only enter the post code and not the full address there is a chance you could arrive at the Immingham Docks, however we are based on Grimsby docks.**

Gro Centre, Humber Bridge Road, Port of Grimsby, North Lincolnshire DN31 3AS



## Security Point



### Parking in OTC car park next to the Gro Centre (Reverse Parking Only)

- **LATE ARRIVAL**

Please ensure you allow plenty of time for travel and parking. OTC Training reserved the right to refuse participation in the course if you arrive late and have not informed us or you have missed elements of the course.

NB: If you expect to be late due to unforeseen circumstances, you must inform us by calling 01472 801756 as soon as it is safe to do so, and we will advise the best course of action.

- If you have any specific learning needs, please inform your trainer. In addition, this course is delivered in English, and you must have sufficient fluency to participate.